



ADACONN®

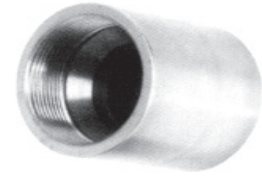
PORT CONNECTORS

ADACONN® PORT CONNECTORS with the ADAFLANGE™ and/or ADAFLANGEPORT™ flange adapters are used to improve performance, compactness and flexibility in plumbing 4-Bolt split flange type hydraulic systems. The top photo to the right shows a connector. The center photo shows two ADAFLANGE™ adapters of the same size fitted to the connector. This permits one to connect two SAE 4-BOLT Flanged Ported Components of the same size together, in a compact and effective manner. These flanges are shown in the same attitude with respect to the longitudinal centerline.

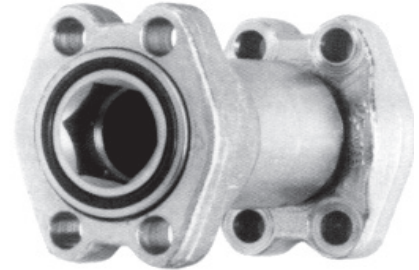
The bottom photo shows an ADAFLANGE™ adapter being fastened to a smaller size connector and an ADAFLANGEPORT™ adapter of the same nominal size as the connector. This is used to extend and reduce the ADAFLANGEPORT™ while still providing the flange type union at the larger 4-Bolt flange port. In this case the ADAFLANGEPORT™ is shown rotated 90° about its longitudinal axis as referenced from the ADAFLANGE™ port connection. It should be noted that the one piece 4-Bolt Flanges are kept as captive assemblies that are free to rotate 360° about the longitudinal centerline to facilitate proper alignment and assembly.

The patented ADACONN® PORT CONNECTOR adds flexibility with good performance characteristics and cost savings for compact mechanical plumbed hydraulic systems.

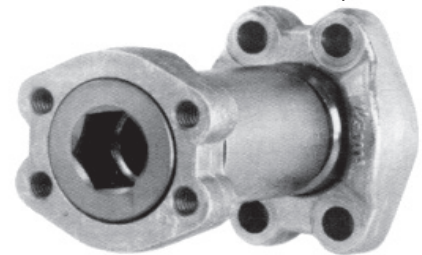
With these connectors the fluid is confined to the inner bore of the connector where the supporting wall thickness is the greatest. These connectors have been proof tested with Code 62 ADAFLANGE™ and ADAFLANGEPORT™ adapters to a proof pressure of 18,000 PSI, attesting to the efficacy of these assemblies.



PORT CONNECTOR



PORT CONNECTOR with two ADAFLANGE™ Adapters



PORT CONNECTOR with ADAFLANGEPORT™ and ADAFLANGE™ Adapters
Patent # 5,848,813

ORDERING INFORMATION

A P C - 40 - S 1 - L T

ADACONN®

PORT
(FOR 37° MALE FLARE FITTING)

CONNECTOR

WEIGHT
OMIT = STANDARD

L T = LIGHT FOR 4000 PSI
MAXIMUM (-40 & -48 SIZES)

FINISH
1 = ZINC CHROMATE

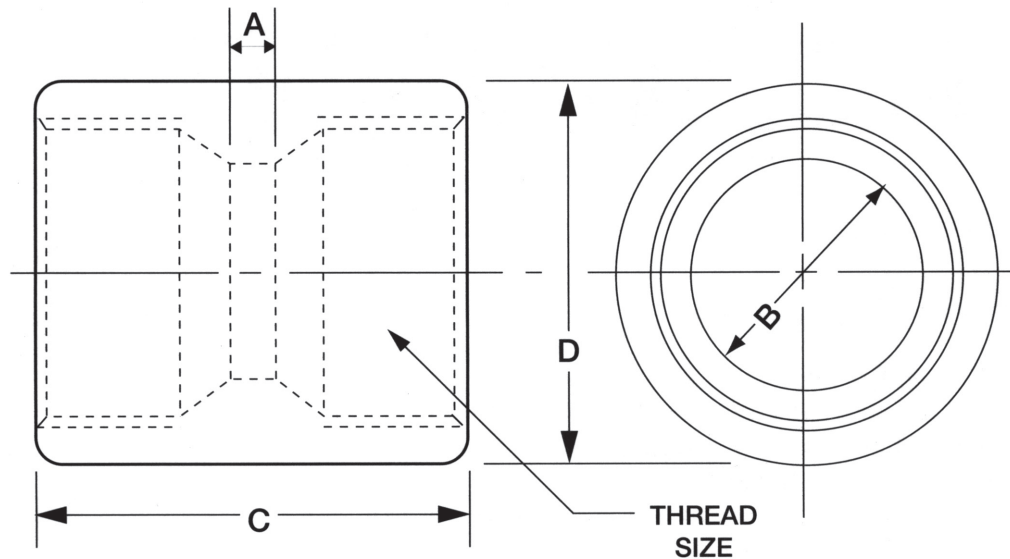
MATERIAL
S = STEEL

CONNECTOR SIZE (THREAD SIZE)

08 = 3/4 - 16	20 = 1 5/8 - 12
10 = 7/8 - 14	24 = 1 7/8 - 12
12 = 1 1/16 - 12	32 = 2 1/2 - 12
14 = 1 3/16 - 12	40 = 3 - 12
16 = 1 5/16 - 12	48 = 3 1/2 - 12

ADACONN®
Blue Bell, Pa. 19422

PORT
CONNECTORS



SIZE	THREAD SIZE	A	B	C	D	TORQUE ft./Lbs.
08	3/4 - 16UN	1/4	.391	1 1/2	15/16	38-42
10	7/8 - 14UN	1/4	.484	1 3/4	1 1/8	57-62
12	1 1/16 - 12UN	1/4	.609	2	1 3/8	79-87
14	1 3/16 - 12UN	1/4	.718	2	1 1/2	94-103
16	1 5/16 - 12UN	1/4	.844	2	1 5/8	108-112
20	1 5/8 - 12UN	3/8	1.078	2 1/4	2	127-140
24	1 7/8 - 12UN	3/8	1.312	2 1/2	2 1/4	158-175
32	2 1/2 - 12UN	3/8	1.781	3	3	245-258
40	3 - 12UN	1/4	2.281	2 1/2	4	312-328
40LT	3 - 12UN	1/4	2.281	2 1/2	3 1/2	312-328
48	3 1/2 - 12UN	3/8	2.781	2 3/4	5	376-392
48LT	3 1/2 - 12UN	3/8	2.781	2 3/4	4	376-392

SELECTION and ASSEMBLY TIPS

- 1 - Select the connector that matches the 37° flare size of the smaller **ADAFLANGE™** or **ADAFLANGEPORT™** Adapter being connected.
- 2 - Select the same size 37° flare male end on the other **ADAFLANGE™** or **ADAFLANGEPORT™** Adapter.
- 3 - Inspect the 37° male ends and the **ADACONN® Connector** seats to be sure that all are free of contamination or defects.
- 4 - Coat the 37° male ends and the connector seats with a compatible lubricant to prevent any gauling during assembly.
- 5 - Assemble hand tight.
- 6 - Secure one adapter in proper stationary mounted **ADACONN®** wrench.
- 7*- Use a torque wrench with its proper **ADACONN®** wrench in the other **ADAFLANGE™** or **ADAFLANGEPORT™** Adapter to properly torque the assembly.

*Before one attempts to torque the assembly, one must be certain that the assembly is properly guided and supported to prevent any loss of applied torque during the torquing process.

ADACONN® Blue Bell, Pa. 19422	PORT CONNECTORS	
---	----------------------------	--